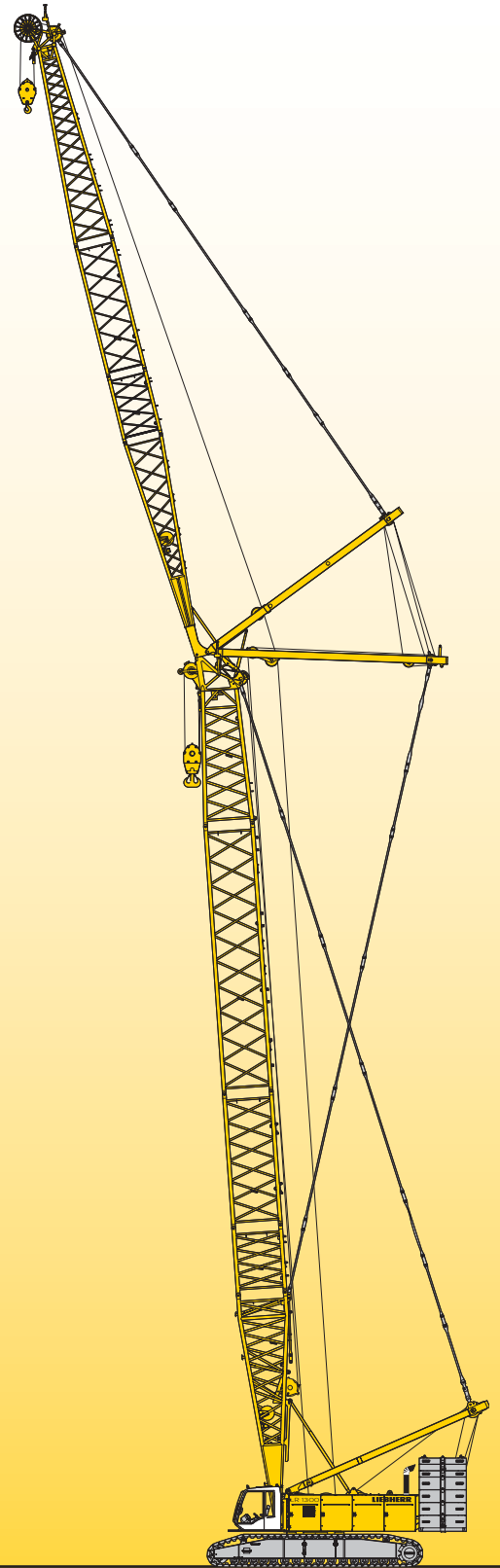


Technical data
Hydraulic lift crane

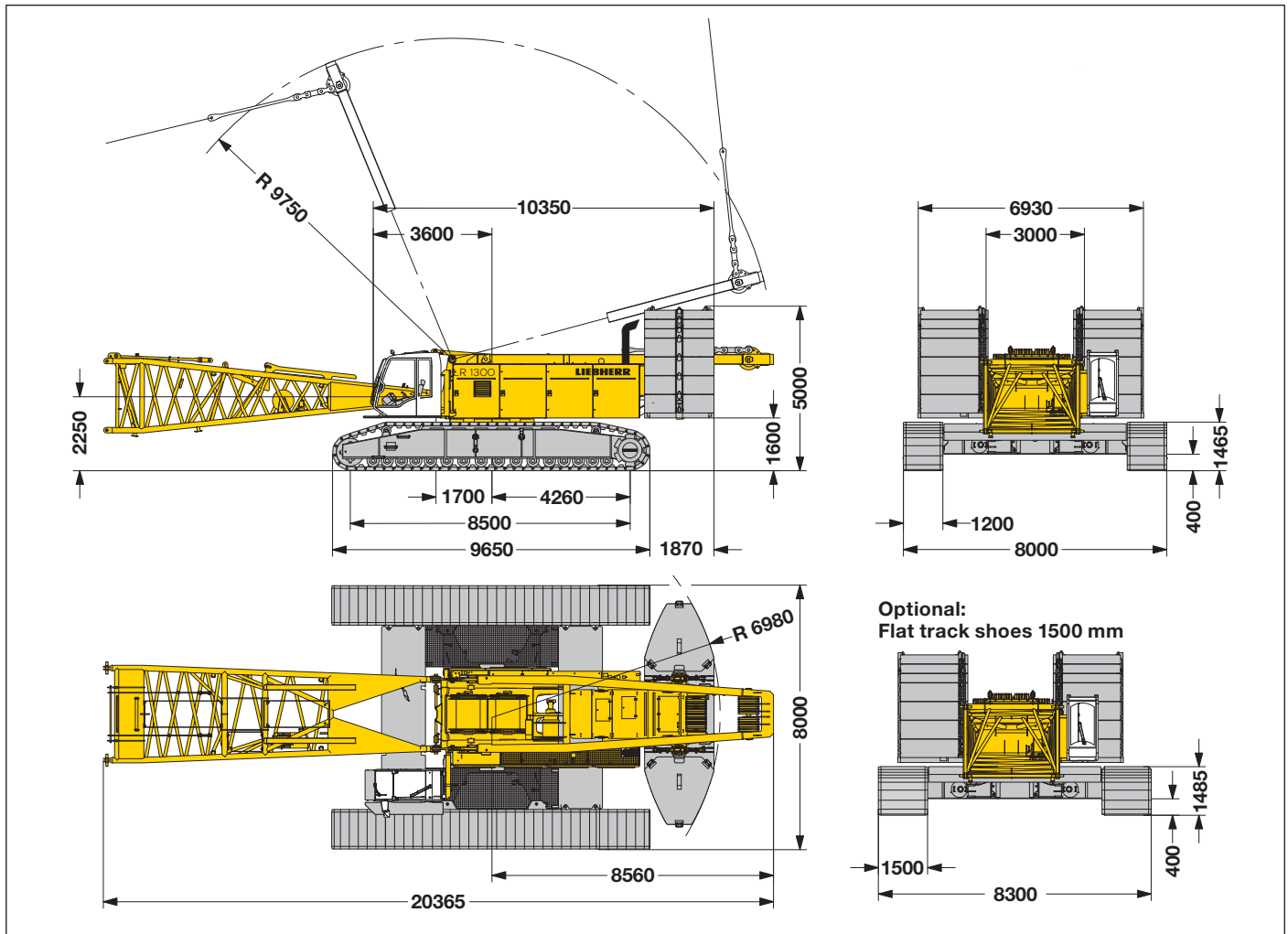
LR 1300 SX
Litronic®



LIEBHERR

Dimensions

Basic machine with undercarriage



Operating weight

The operating weight includes the basic machine with crawlers, 2 main winches 150 kN and 20 m main boom, consisting of A-frame, boom foot (10 m), boom head (7 m), boom extension (3 m), 124 t basic counterweight, 57 t carbody counterweight and 300 t hook block.

Total weight _____ approx. 290 t

Ground pressure

Ground bearing pressure _____ 1.45 kg/cm²

Equipment

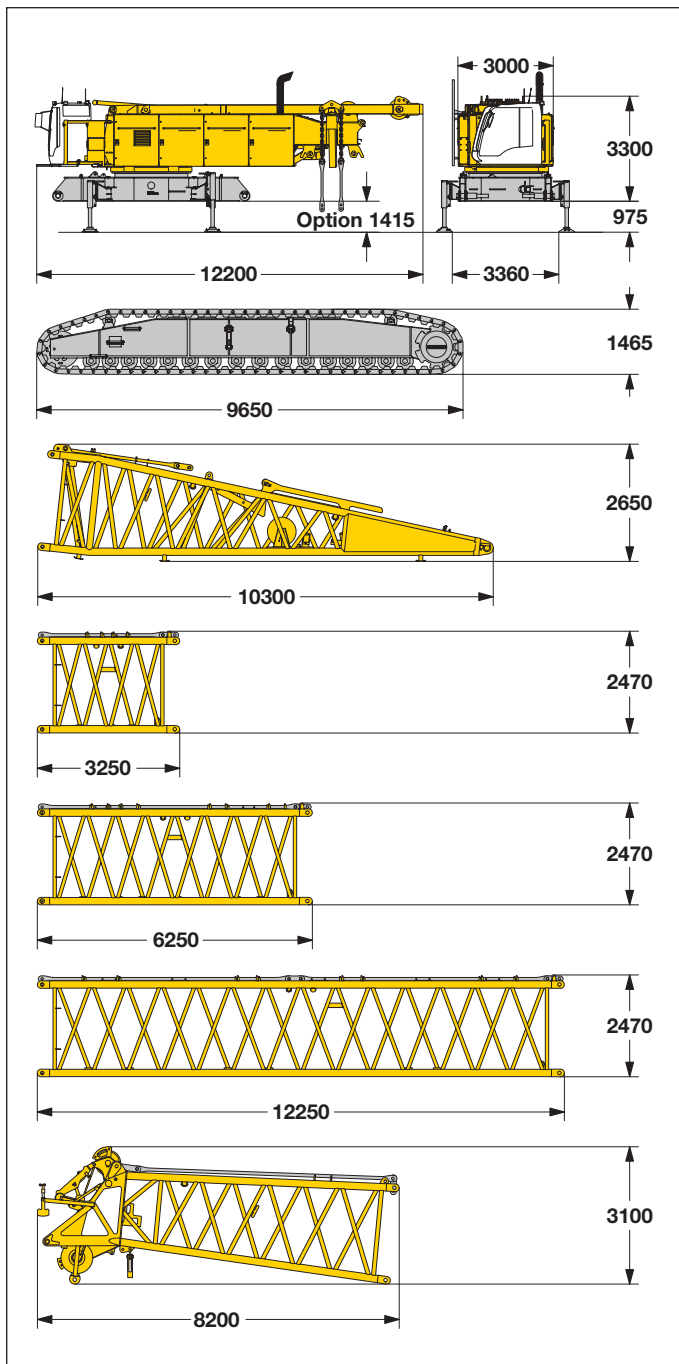
Main boom (No. 2821.xx) max. length _____ 92 m
 Luffing jib (No. 2316.xx) max. length _____ 113 m
 Max. combination _____ main boom 56 m and luffing jib 113 m
 Auxiliary jib _____ 36 t

Remarks

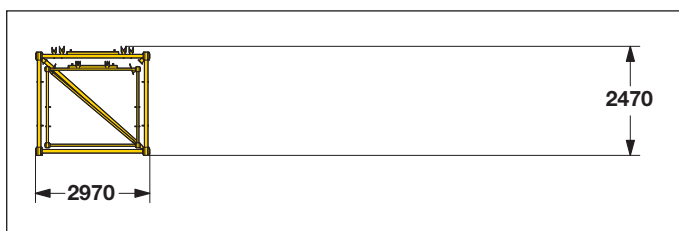
1. The lifting capacities stated are valid for lifting operation only (corresponding with crane classification according to F.E.M. 1.001, crane group A1).
2. Crane standing on firm, horizontal ground.
3. The weight of the lifting device (hoisting ropes, hook block, shackle etc.) must be deducted from the gross lifting capacity to obtain a net lifting value.
4. Additional equipment on boom (e.g. boom walkways, auxiliary jib) must be deducted to get the net lifting capacity.
5. For max. wind speed please refer to lift chart in operator's cab or manual.
6. Working radii are measured from center of swing and under load.
7. The lifting capacities are valid for 360 degrees of swing.
8. Calculation of stability under load is based on DIN 15019 / part 2 / chart 1 and ISO 4305 Table 1 + 2 tipping angle 4°.
9. The structures are calculated according to F.E.M. 1.001 - 1998 (EN 13001-1; EN 13001-2).

Transport dimensions and weights

Basic machine and boom (No. 2821.xx)



*) Including pendants



*) Including pendants

Basic machine

with A-frame, 2x 150 kN crane winches, without boom foot, hoisting ropes, basic counterweight and crawlers

Width	3000 mm
Weight	41800 kg

Crawler

	Optional	Standard
Flat track shoes	1500 mm	1200 mm
Width	1500 mm	1400 mm
Weight	26200 kg	22350 kg

Boom foot (No. 2821.30)

Width	2970 mm
Weight without winch	5700 kg
Weight incl. winch and rope	7400 kg

Boom section (No. 2821.30) 3 m

Width	2970 mm
Weight*	1510 kg

Boom section (No. 2821.30) 6 m

Width	2970 mm
Weight*	2350 kg

Boom section (No. 2821.30) 12 m

Width	2970 mm
Weight*	4120 kg

Boom head (No. 2821.24)

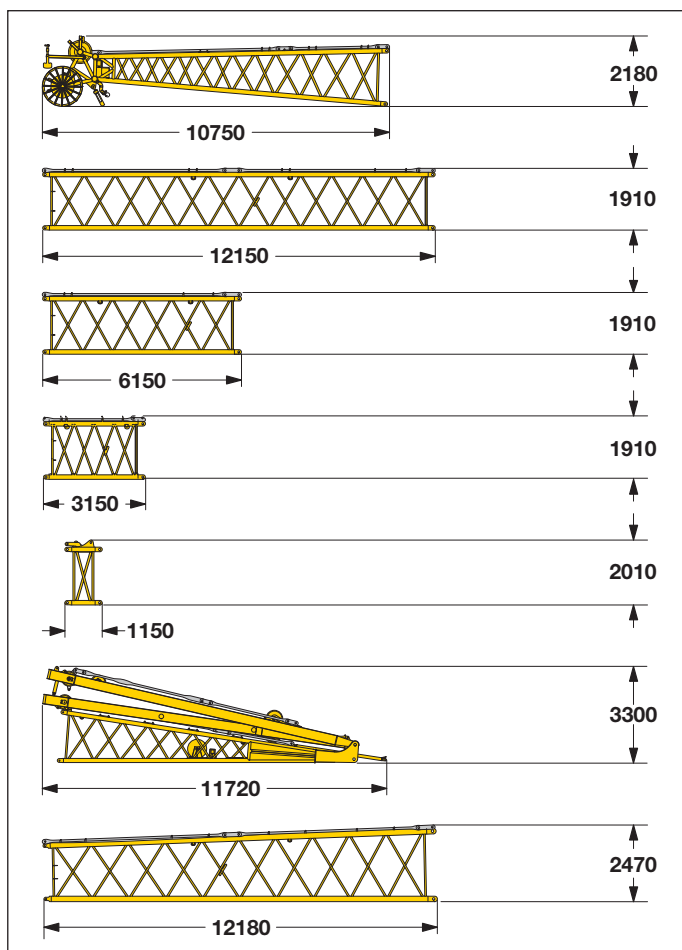
Width	2970 mm
Weight*	5400 kg

Boom - luffing jib transport option

No. 2821.xx/2316.xx	12/12	6/6	3/3 m
Length	12500	6250	3250 mm
Weight*	5920	3300	2110 kg

Transport dimensions and weights

Luffing jib (No. 2316.xx)



*) including pendant straps

Luffing jib head (No. 2316.20)

Width	2430 mm
Weight*	2300 kg

Luffing jib section (No. 2316.20) **12 m**

Width	2430 mm
Weight*	1800 kg

Luffing jib section (No. 2316.20) **6 m**

Width	2430 mm
Weight*	950 kg

Luffing jib section (No. 2316.20) **3 m**

Width	2430 mm
Weight*	600 kg

L - boom jib section (No. 2316.20) **1 m**

Width	2430 mm
Weight*	640 kg

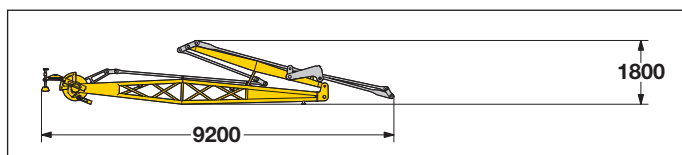
Luffing jib foot with A-frames (No. 2316.22)

Width	2670 mm
Weight*	8060 kg

L - boom section tapered (No. 2821/2316.24) **12 m**

Width	2970 mm
Weight*	2700 kg

Fixed jib (No. 0906.21)

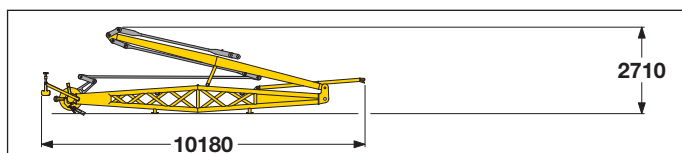


*) including pendants

Fixed jib (No. 0906.21)

Width	1500 mm
Weight*	2400 kg

Fixed jib (No. 1507.20)



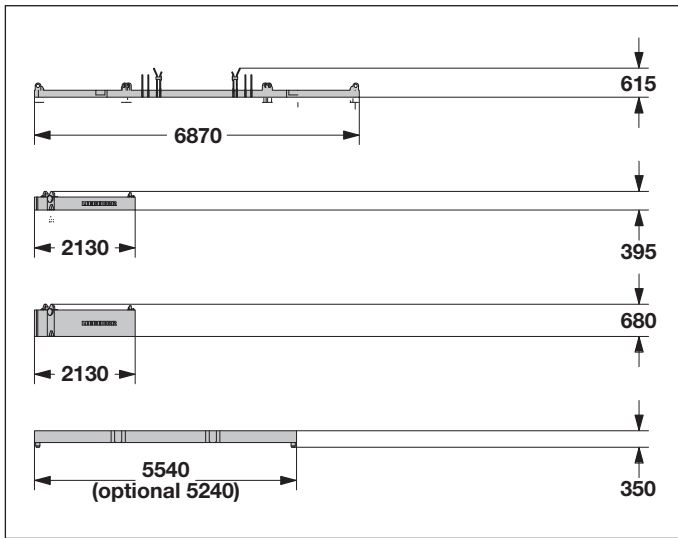
*) including carbon fibre pendants

Fixed jib (No. 1507.20)

Width	2470 mm
Weight*	3300 kg

Transport dimensions and weights

Counterweights



Counterweight 1x

Width	2110 mm
Weight	14500 kg

Counterweight 6x

Width	2110 mm
Weight	5000 kg

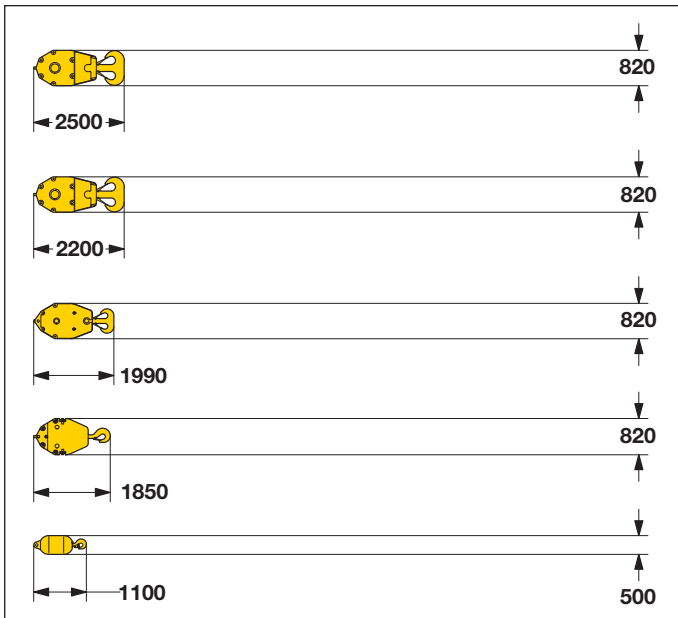
Counterweight 8x

Width	2110 mm
Weight	10000 kg

Carbody counterweight 4x

	Optional	Standard
Width	1500 mm	1200 mm
Weight	13400 kg	14250 kg

Hooks



300 t hook block - 11 sheaves

Width	880	1230 mm
Weight	3200	5500 kg

150 t hook block - 5 sheaves

Width	500	660	820 mm
Weight	1600	2800	4000 kg

100 t hook block - 3 sheaves

Width	340	480	620 mm
Weight	1100	2050	3000 kg

50 t hook block - 1 sheave

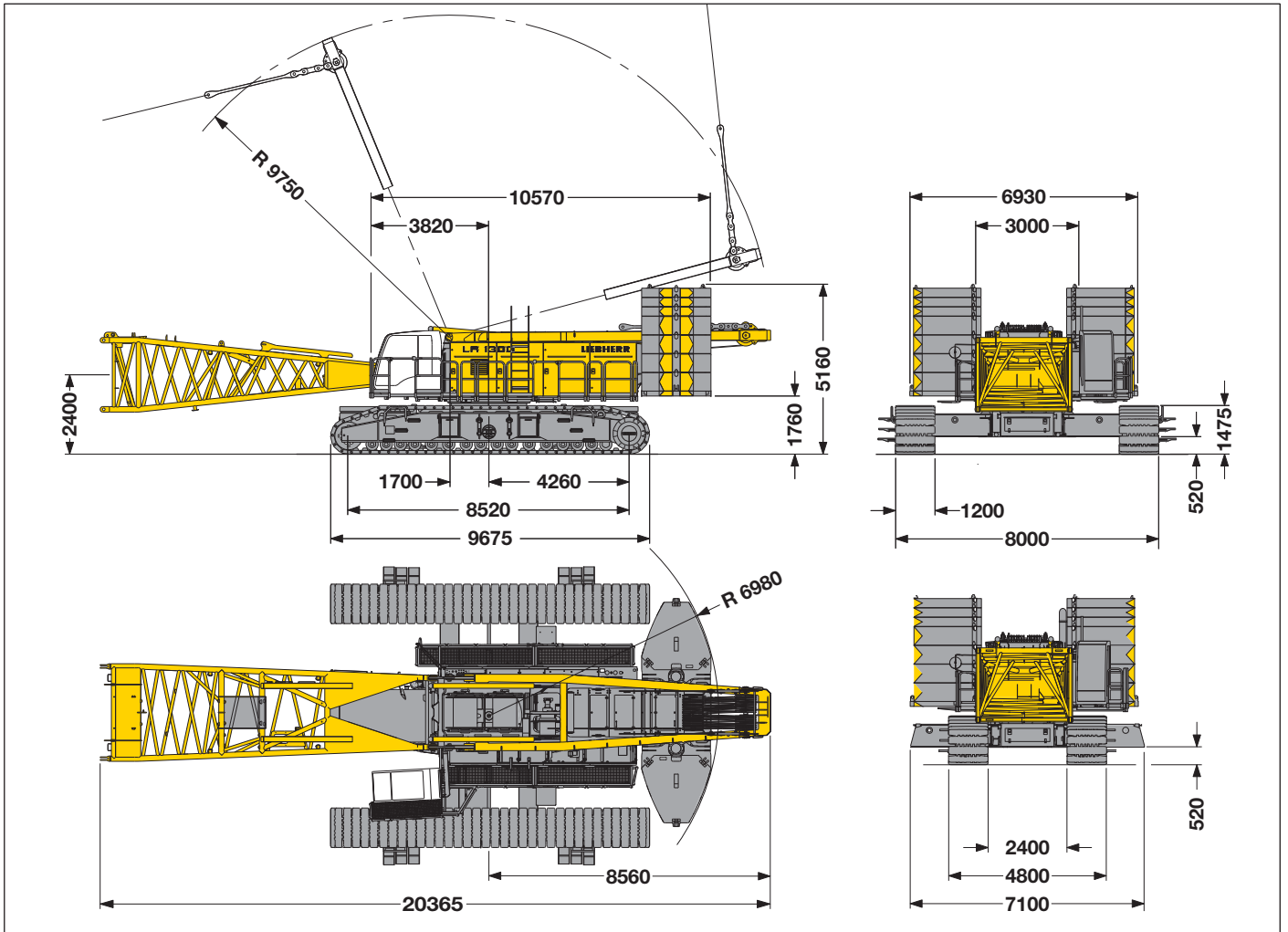
Width	280	410	540 mm
Weight	800	1600	2400 kg

16 t single hook

Width	500 mm
Weight	900 kg

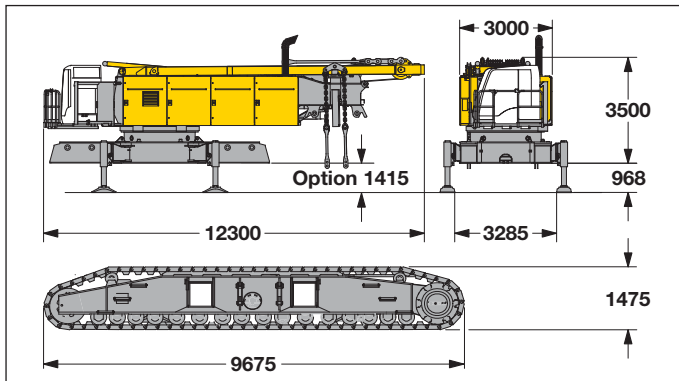
Dimensions (optional)

Basic machine with w-undercarriage



Transport dimensions and weights (optional)

Basic machine



Basic machine

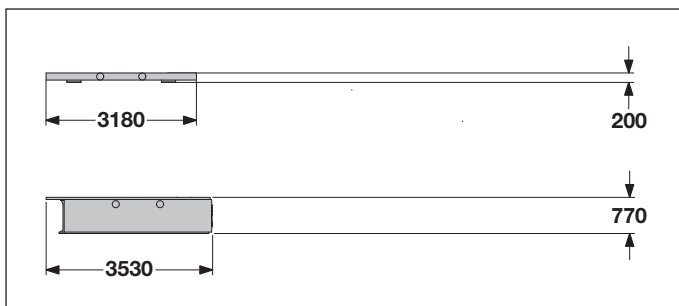
with A-frame, 2x 150 kN crane winches, without boom foot, hoisting ropes, basic counterweight and crawlers

Width	3000 mm
Weight	46500 kg

Crawler

Flat track shoes	1200 mm
Width	1200 mm
Weight	23000 kg

Carbody counterweights (optional)



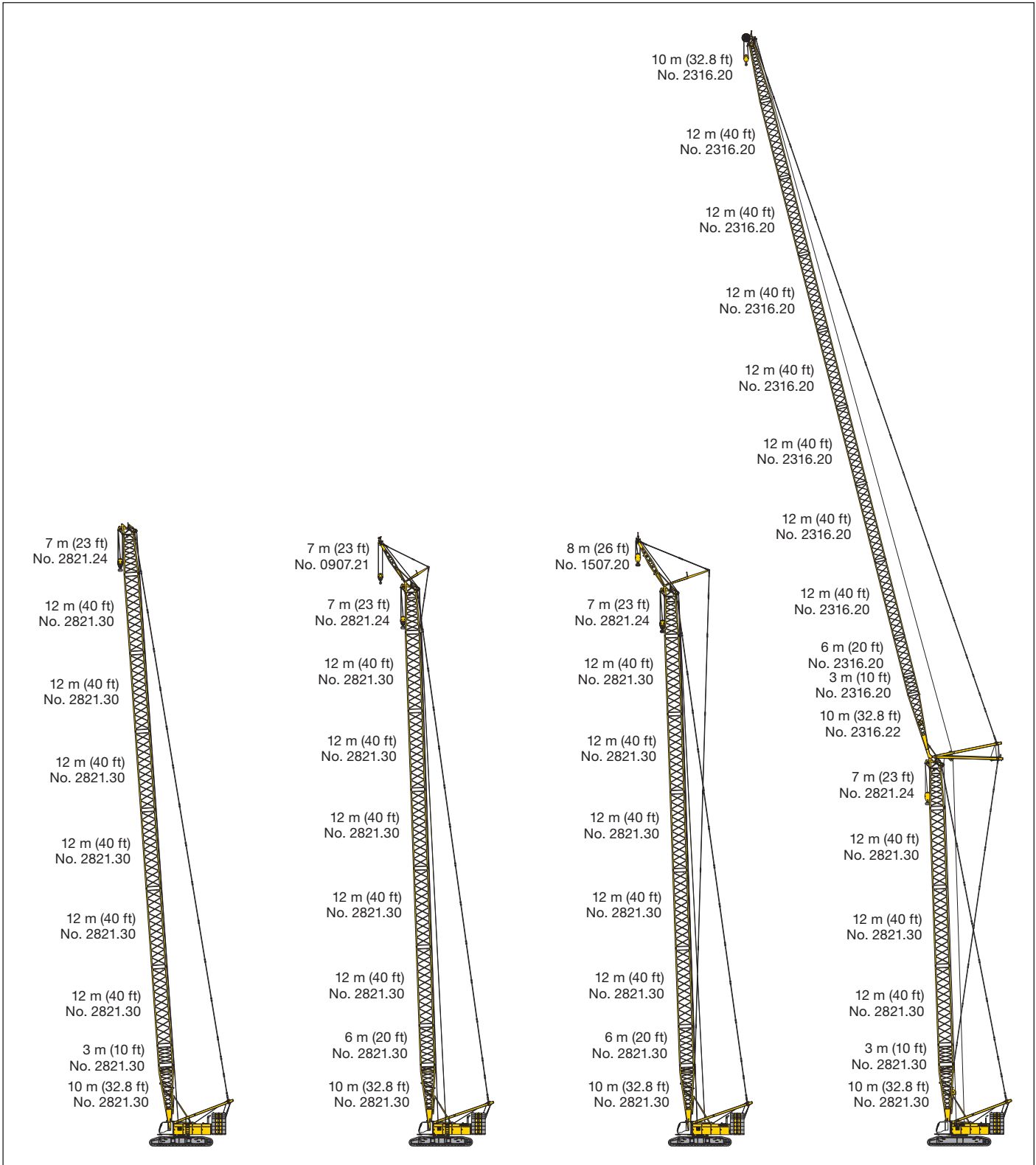
Carbody counterweight **2x**

Width	1800 mm
Weight	6200 kg

Carbody counterweight **2x**

Width	1800 mm
Weight	20100 kg

Boom combinations



Main boom No.2821.xx — 92 m

Max. combination — 90 m
Main boom No. 2821.xx — 83 m
Fixed jib No. 0906.21 — 7 m

Max. combination — 91 m
Main boom No. 2821.xx — 83 m
Fixed jib No. 1507.21 — 8 m

Max. combination — 169 m
Main boom No. 2821.xx — 56 m
Luffing jib No. 2316.xx — 113 m
Max. combination — 106 m
Main boom No. 2821.xx — 68 m
Luffing jib No. 2316.xx — 38 m

Technical description



Engine

Power rating according to ISO 9249. 450 kW (603 hp) at 1900 rpm
Engine type ———— Liebherr D 9508 A7
Fuel tank ———— 900 l capacity with continuous level indicator and reserve warning
Engine complies with NRMM exhaust certification EPA / CARB Tier 3 and 97/68 EC Stage III.



Hydraulic system

An axial displacement pump supplies the open loop hydraulic system for boom luffing, jib luffing and travel. The main hoist winches and swing are operated in a closed loop system. All functions can be operated simultaneously. To minimize peak pressure an automatic working pressure cut-off has been installed. All filters are electronically monitored.
The use of synthetic environmentally friendly (biodegradable) oils is possible.
Working pressure ——— max. 350 bar
Oil tank capacity ——— 900 l



Luffing jib winch

Line pull ———— max. 105 kN
Rope diameter ——— 20 mm
Jib luffing ———— 69 sec. from 15° to 78°



Boom winch

Line pull ———— max. 217 kN
Rope diameter ——— 24 mm
Boom up ———— 127 sec. from 15° to 86°



Swing

Consists of rollerbearing with external teeth, swing drive with fixed axial piston hydraulic motor, spring loaded and hydraulically released multi-disc holding brake, planetary gearbox and pinion.
Both swing modes are possible – speed control or free swing.
A multi-disc holding brake acts automatically at zero swing motion.
Swing speed from 0 – 1.8 rpm continuously variable.



Main winches

Line pull (1st layer) ———— max. 215 kN
Line pull (7th layer) ———— 150 kN
Rope diameter ———— 28 mm
Drum diameter ———— 730 mm
Rope speed m/min ———— 0 – 138
Rope capacity in 7 layers ———— 570 m

The winches are outstanding in their compact design and easy assembly.
Propulsion is via a planetary gearbox in an oil bath.
Load support by the hydraulic system; additional safety factor provided by a spring loaded, multi-disc holding brake.
The main winches use pressure controlled, variable flow hydraulic motors.
This system features sensors that automatically adjust oil flow to provide max. winch speed depending on load.
Option – winch with freefall system:
Clutch and braking functions on the freefall system are provided by a compact designed, low wear and maintenance free multi-disc brake.



Crawlers

Propulsion through axial piston motor, hydraulically released spring loaded multi-disc brake. crawler tracks, hydraulic chain tensioning device.
Flat track shoes ——— 1200 mm (optional 1500 mm)
Drive speed ———— 0 – 1.3 km/h



Control

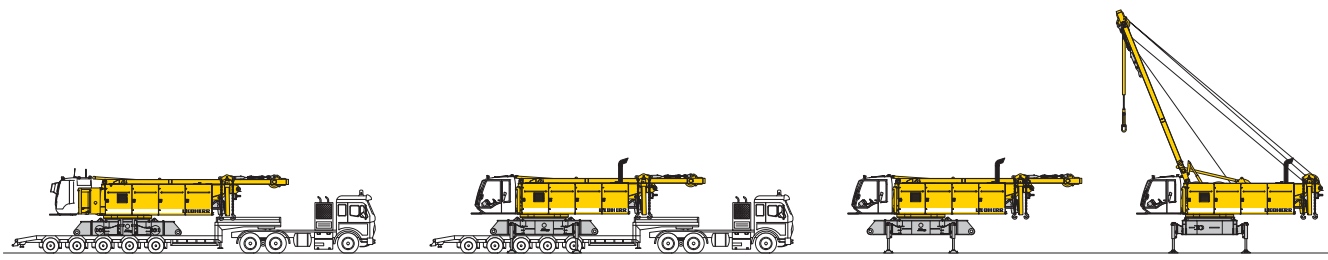
The control system – developed and manufactured by Liebherr – is designed to withstand extreme environmental conditions such as temperature, vibration and electromagnetic interference and to meet all requirements that are needed in heavy duty crane operation.
Complete machine operating data are shown on a high resolution display. Standard operational information is displayed by means of graphical symbols, fault indications are displayed in plain text (more than 15 languages available).
The cranes are equipped with proportional control for all main movements, which can be carried out simultaneously.
The crane is operated with 2 multi-directional joysticks. the right for winch I and boom, the left for winch II and swing control.
Option:
Bi-directional double T-levers for simultaneous boom and luffing jib operation.
The crawlers are activated by the two foot pedals. Additionally, hand levers can be attached to the pedals.
Remote control for assembly of counterweight and boom hinge pins.



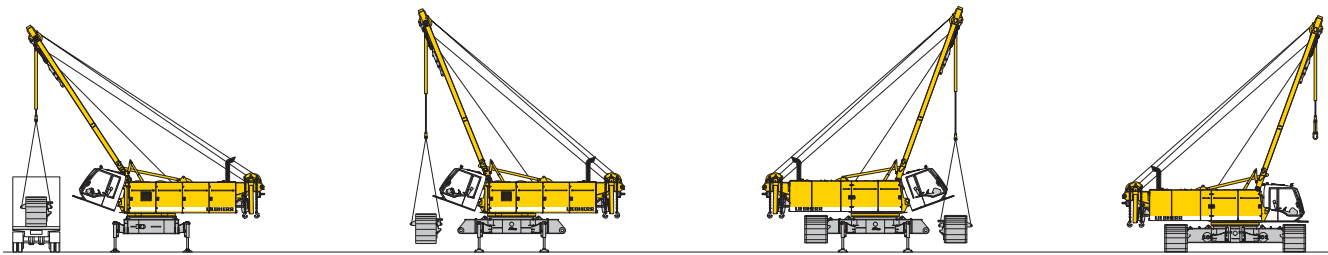
Noise emission

Noise emissions correspond with 2000/14/EC directive on noise emission by equipment used outdoors.

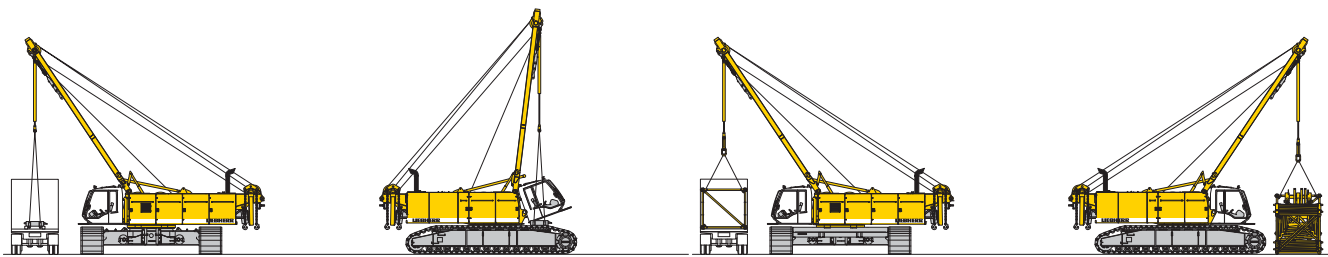
Self assembly system



Unloading of basic machine

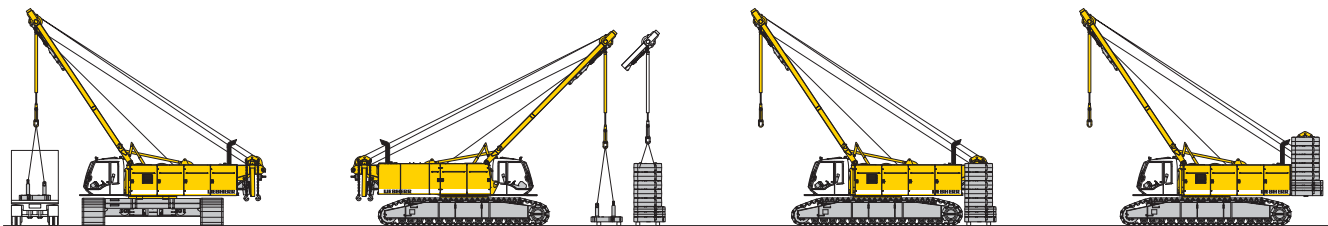


Unloading and assembly of crawlers



Unloading and assembly of carbody counterweight

Unloading and assembly of boom

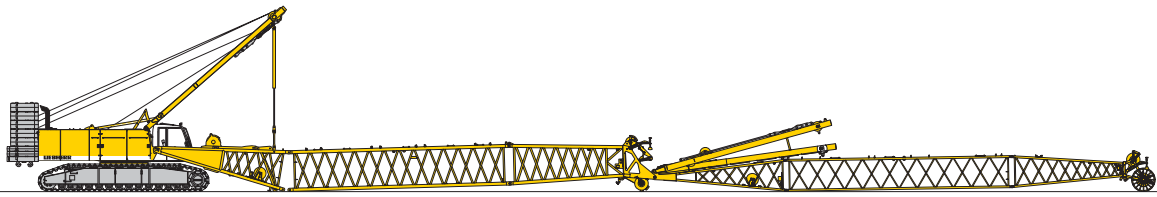


Unloading and assembly of counterweight

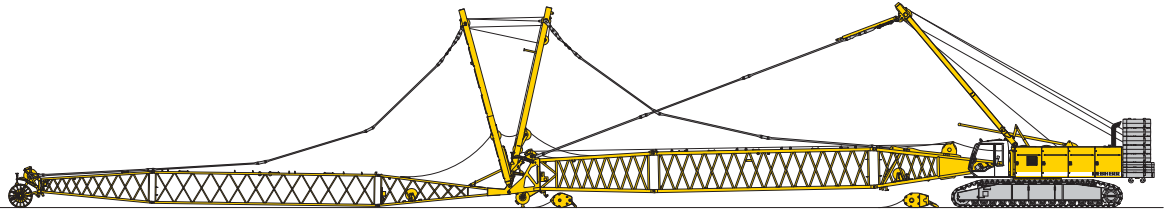


Unloading and assembly of boom foot

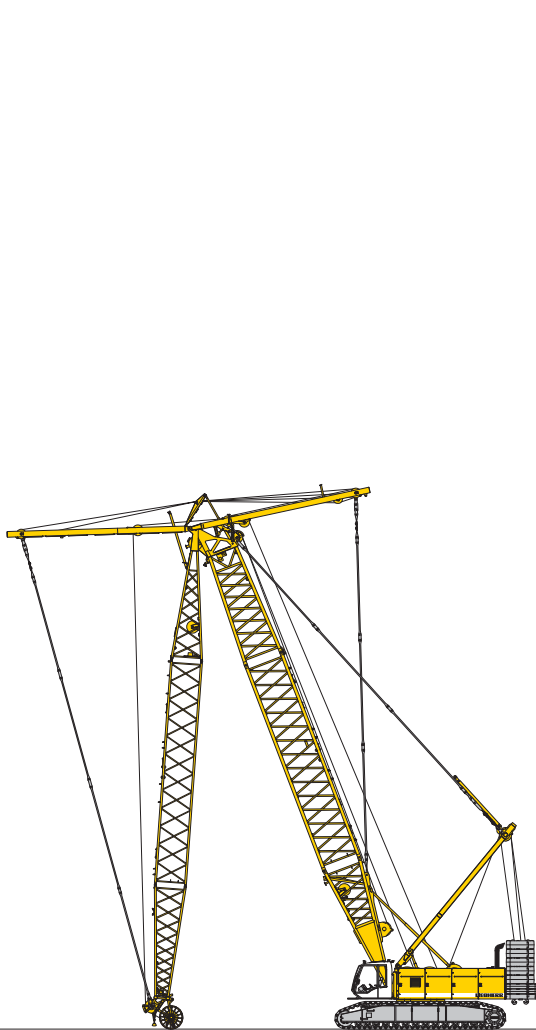
Erecting of main boom to working position



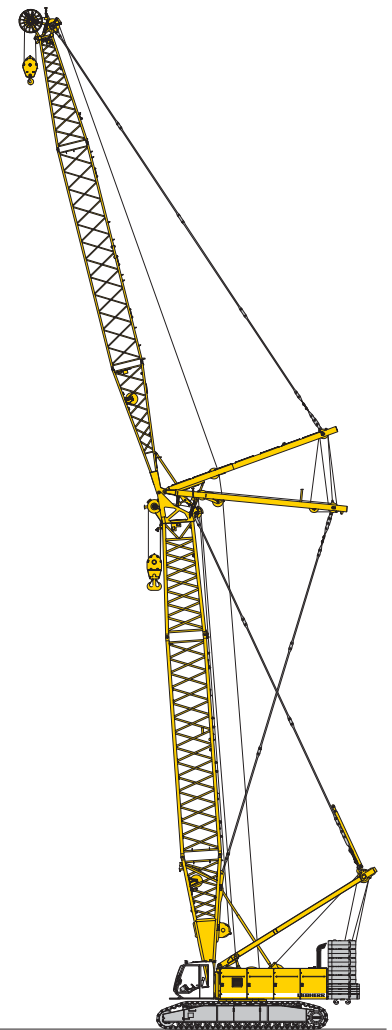
Assembly of boom



Reeving of hoist and luffing jib ropes



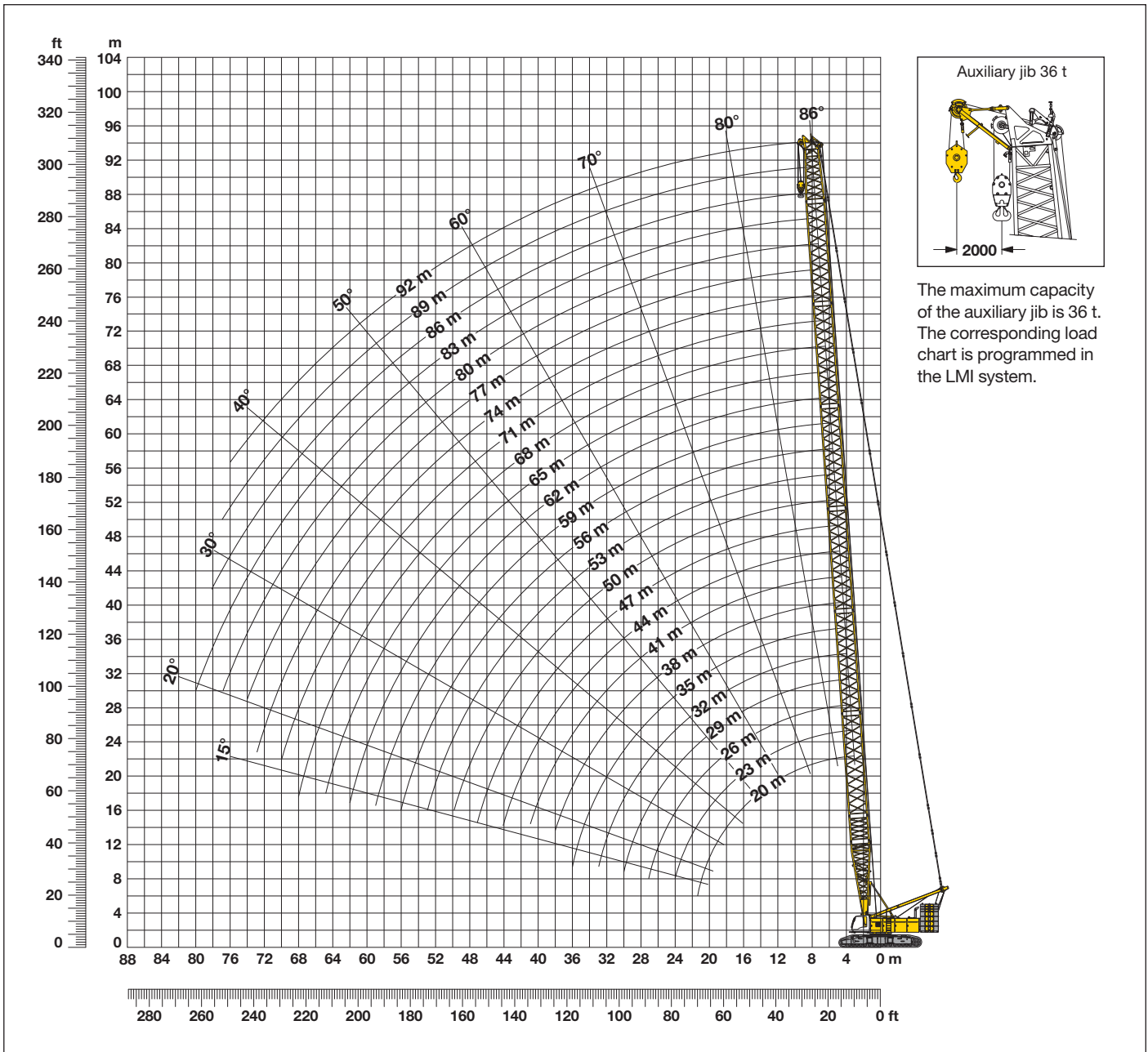
Erecting of main boom and luffing jib



Working position

Main boom (No. 2821.xx) **86° - 15°**

124 t counterweight and 57 t carbody counterweight



Main boom configuration (No. 2821.xx)

Configuration for boom lengths between 20 m and 92 m

Configuration	Length	Amount of boom extensions																												
		10 m	13 m	16 m	19 m	22 m	25 m	28 m	31 m	34 m	37 m	40 m	43 m	46 m	49 m	52 m	55 m	58 m	61 m	64 m	67 m	70 m	73 m	76 m	79 m	82 m	85 m	88 m	91 m	94 m
Boom foot	10 m	1	1	1	1	1	1	1	1	1	1	1	1	1	1	1	1	1	1	1	1	1	1	1	1	1	1	1	1	1
Boom insert	3 m	1		1		1		1		1		1		1		1		1		1		1		1		1		1		1
Boom insert	6 m		1	1		1		1		1		1		1		1		1		1		1		1		1		1		1
Boom insert	12 m				1	1	1	1	2	2	2	2	3	3	3	3	4	4	4	4	5	5	5	5	6	6	6	6	6	6
Boom head	7 m	1	1	1	1	1	1	1	1	1	1	1	1	1	1	1	1	1	1	1	1	1	1	1	1	1	1	1	1	1
Boom length (m)		20	23	26	29	32	35	38	41	44	47	50	53	56	59	62	65	68	71	74	77	80	83	86	89	92				

Lift chart for main boom (No. 2821.xx)

104 t counterweight and 57 t carbody counterweight

Radius (m)	Boom length in (m)														Radius (m)
	20	23	26	32	38	44	50	56	62	68	74	80	83	86	
	t	t	t	t	t	t	t	t	t	t	t	t	t	t	
4.3	300.5														4.3
5	300.5	292.6	295.3												5
6	261.5	260.0	256.1	245.5	236.5	213.4									6
7	225.5	225.3	222.0	215.8	206.9	198.3	189.3	169.3							7
8	195.9	195.7	195.2	191.1	184.6	178.4	168.6	161.3	151.1	135.3					8
9	172.9	172.8	172.2	171.8	166.0	160.2	152.7	145.0	137.8	131.1	118.7	103.1	95.6	88.9	9
10	154.5	154.4	153.8	153.4	151.1	143.6	136.5	130.1	124.0	118.3	111.8	101.7	95.6	88.9	10
12	126.8	126.7	126.2	125.8	122.6	117.3	112.1	107.4	102.8	98.5	94.4	90.5	87.5	83.3	12
14	107.0	106.9	106.5	106.1	102.8	98.7	94.7	91.0	87.3	83.9	80.5	77.4	75.8	74.3	14
16	89.2	89.3	89.2	89.1	88.1	84.8	81.5	78.5	75.5	72.6	69.8	67.1	65.8	64.5	16
18	75.6	75.8	75.6	75.5	75.1	74.1	71.3	68.7	66.1	63.7	61.2	58.9	57.7	56.6	18
20	65.2	65.5	65.4	65.3	64.8	64.5	63.1	60.8	58.5	56.4	54.2	52.2	51.1	50.1	20
24		50.8	50.8	50.8	50.3	49.9	49.3	48.8	47.1	45.3	43.5	41.8	40.9	40.0	24
26			45.3	45.4	44.9	44.5	43.9	43.4	42.6	41.0	39.3	37.7	36.9	36.0	26
32				33.7	33.4	33.0	32.4	31.8	31.2	30.6	29.6	28.3	27.6	26.8	32
38					25.7	25.4	24.8	24.3	23.6	23.0	22.3	21.6	21.0	20.4	38
42						21.6	21.0	20.5	19.8	19.2	18.5	17.9	17.5	17.0	42
50							15.3	15.0	14.3	13.7	13.0	12.4	12.0	11.6	50
55								12.3	11.7	11.1	10.4	9.7	9.4	9.0	55
60									9.4	8.9	8.2	7.5	7.2	6.8	60
65										7.0	6.3	5.7	5.4	5.0	65
70											4.7	4.1	3.7	3.2	70
75												2.5	2.1		75

TLT 10525129 M00000 Preliminary 5

Lift chart for main boom (No. 2821.xx)

124 t counterweight and 57 t carbody counterweight

Radius (m)	Boom length in (m)																Radius (m)
	20	23	26	32	38	44	50	56	62	68	74	80	83	86	89	92	
	t	t	t	t	t	t	t	t	t	t	t	t	t	t	t	t	
6.4							189.3									6.4	
7							189.3	169.3								7	
8					184.6	178.4	168.6	161.3	151.1	135.3						8	
9					166.0	160.2	154.1	146.1	138.5	131.7	118.7	103.1	95.6	88.9		9	
10			161.2	156.5	152.3	145.7	139.9	134.5	127.6	120.2	111.8	101.7	95.6	88.9	83.5	78.3	10
12	136.7	136.7	134.7	132.8	127.3	124.0	119.6	113.5	108.4	103.5	97.8	91.8	87.5	83.3	79.3	75.4	12
14	115.5	115.5	115.0	112.8	110.3	106.2	102.8	99.0	94.1	89.0	84.1	81.3	79.4	77.1	75.0	71.7	14
16	99.5	99.5	99.1	98.2	95.6	93.5	89.6	86.2	82.8	78.9	73.9	71.3	69.5	67.5	65.9	63.9	16
18	85.8	86.0	85.9	85.8	84.2	82.3	79.9	76.4	73.0	69.6	66.1	64.1	62.3	60.2	58.7	56.8	18
20	74.2	74.5	74.4	74.3	73.8	73.2	71.3	68.8	65.4	61.8	59.1	57.4	56.3	54.5	53.3	51.4	20
22		65.4	65.3	65.3	64.8	64.4	63.8	62.0	59.5	55.8	53.2	51.6	50.6	49.1	48.0	46.7	22
24		58.0	58.0	58.0	57.5	57.1	56.5	56.0	54.0	51.0	48.6	46.8	45.8	44.4	43.4	42.2	24
26			51.9	52.0	51.5	51.1	50.5	50.0	49.3	46.6	44.8	43.0	41.8	40.6	39.5	38.4	26
32				38.9	38.6	38.2	37.6	37.0	36.4	35.8	35.0	33.5	32.8	31.9	31.0	30.1	32
38					30.0	29.7	29.1	28.6	27.9	27.3	26.6	25.9	25.5	24.8	24.2	23.6	38
44						23.6	23.1	22.6	21.9	21.3	20.5	19.9	19.6	19.2	18.9	18.3	44
50							18.5	18.1	17.4	16.8	16.1	15.4	15.1	14.7	14.4	14.0	50
55								15.1	14.5	13.9	13.1	12.6	12.2	11.7	11.5	11.0	55
60									12.1	11.5	10.8	10.2	9.8	9.3	8.9	8.3	60
65										9.4	8.7	7.9	7.5	6.9	6.6	6.1	65
70											6.7	5.9	5.5	4.9	4.6	4.1	70
75												4.1	3.7	3.2	2.9	2.3	75
80													2.1				80

TLT 10525129 M00000 Preliminary 5

Above lift chart is for reference only.
For actual lift duty and complete chart with all available configurations please refer to lift chart in operator's cab or manual.

Lift chart - luffing jib (No. 2316.xx)

Main boom angle 88°

Main boom 20 m

Radius (m)	Jib length in (m)							
	20	41	53	65	77	89	101	110
12.4	t	80.5						
15		65.0	57.6					
17	58.3	52.8	52.3					
18	53.1	48.5	47.3	40.4				
20	45.1	41.2	39.8	37.6	28.6			
22	39.4	35.2	34.2	33.7	28.1			
24		31.4	30.1	29.0	26.3	19.1		
26		28.4	26.8	25.6	24.5	18.4	13.7	
28		25.9	24.2	23.1	21.9	17.9	13.4	10.5
32		22.0	20.4	19.0	18.1	15.6	12.7	9.9
36		18.8	17.6	16.1	15.0	14.0	11.4	9.2
42		15.4	14.2	12.7	11.8	10.3	9.4	8.4
50			11.0	9.8	8.5	7.3	6.2	5.5
60				7.2	6.0	4.7	3.7	2.9
65				6.1	5.1	3.8	2.7	
75					3.5	2.3		

Main boom 32 m

Radius (m)	Jib length in (m)							
	20	41	56	65	77	89	101	113
11	117.0							
13	108.8	76.1						
16	82.6	71.2	49.9					
18	68.6	63.2	48.8	37.2				
22	49.0	46.4	42.3	34.9	26.8			
24		40.4	39.0	33.2	25.8	18.3		
26		36.1	35.1	31.7	25.1	17.8	13.0	
28		32.5	31.5	30.3	24.4	17.3	12.8	9.3
32		27.4	26.3	25.2	23.6	16.5	12.2	9.0
36		23.5	22.3	21.6	20.2	15.9	11.6	8.5
42		19.4	18.2	17.2	16.6	13.8	10.9	7.8
55			12.3	11.3	10.6	9.2	8.6	6.8
65				8.5	7.5	6.3	5.4	4.5
75					5.4	4.2	3.2	2.3
80						3.4	2.3	
85						2.6		

Main boom 41 m

Radius (m)	Jib length in (m)							
	20	41	53	65	77	89	101	113
8.8	117.0							
14	96.2	69.4						
16	78.4	67.1	50.5					
19	60.3	57.0	48.1	35.5				
22	47.6	45.0	41.7	33.6	25.4			
24		39.3	38.1	32.1	24.5	17.6		
26		35.2	33.8	30.5	23.8	17.2	12.6	
28		31.8	30.3	29.4	23.2	16.8	12.5	
30		29.2	27.7	26.7	22.7	16.5	12.2	8.9
38		21.7	20.3	19.4	18.0	14.9	11.1	8.0
44		15.1	16.6	15.7	14.7	12.7	10.2	7.4
55			12.1	11.1	10.2	8.9	8.1	6.3
65				8.3	7.3	6.2	5.2	4.3
75					5.3	4.1	3.1	2.2
80						3.3	2.3	
85						2.6		

Main boom 56 m

Radius (m)	Jib length in (m)							
	20	41	53	65	77	92	101	113
9.3	101.3							
14	83.1	57.6						
17	65.5	55.4	43.1					
19	56.1	49.4	42.0	31.5				
22	45.2	40.6	37.3	30.4	22.6			
24	39.3	35.6	34.0	29.3	22.2			
26		32.1	30.6	27.5	21.6	14.5		
28		29.2	27.7	26.2	21.1	14.2	11.5	
30		26.8	25.4	24.3	20.5	13.9	11.2	8.1
38		20.1	18.8	17.9	16.5	12.9	10.3	7.4
44		16.8	15.5	14.5	13.5	11.0	9.4	6.9
55			11.4	10.3	9.4	7.9	7.2	5.4
65				7.8	6.7	5.4	4.6	3.8
70					5.8	4.4	3.6	2.7
75					4.9	3.5	2.8	
85						2.1		

Main boom 59 m

Radius (m)	Jib length in (m)							
	20	41	53	65	77	89	101	104
9.4	94.8							
14	79.3	55.6						
17	63.1	53.7	41.8					
19	54.1	48.3	40.7	30.6				
22	43.5	40.2	36.4	29.7	22.2			
24	38.0	35.4	33.3	28.7	21.8	15.5		
28		29.0	27.3	25.6	20.7	15.1	11.2	10.4
30		26.7	25.1	23.9	20.2	14.9	11.0	10.3
32		24.8	23.2	21.9	19.7	14.6	10.9	10.2
36		21.4	19.9	18.9	17.5	14.0	10.5	9.9
40		19.0	17.5	16.4	15.1	12.8	10.0	9.4
44		16.8	15.3	14.3	13.3	11.2	9.3	8.9
55			11.3	10.2	9.3	7.8	7.0	6.7
65				7.8	6.6	5.4	4.4	4.2
75					4.8	3.6	2.7	2.5
85						2.2		

Main boom 65 m

Radius (m)	Jib length in (m)		
	20	41	53
9.6	84.8		
14	73.6	50.7	
17	60.7	48.7	37.8
19	52.8	44.7	36.8
20	49.0	43.3	36.2
22	43.0	38.0	33.6
24	37.9	33.5	31.0
26		30.3	28.3
30		25.4	23.6
34		21.9	20.2
38		19.2	17.5
40		18.1	16.5
42		17.1	15.4
44		16.1	14.5
55			10.6
65			

Main boom 68 m

Radius (m)	Jib length in (m)
	38
13.4	52.0
14	52.0
16	49.7
18	46.5
20	42.6
22	36.8
24	32.8
26	29.7
28	27.1
30	25.3
32	23.4
34	21.7
36	20.2
38	19.1
40	18.0
42	15.1

TLT 10525129 M00000 Preliminary 7

Capacities in metric tons with luffing jib (No. 2316.xx) 124 t counterweight + 57 t carbody counterweight. Above lift chart is for reference only. For actual lift duty and complete chart with all available configurations please refer to lift chart in operator's cab or manual.

Lift chart - luffing jib (No. 2316.xx)

Main boom angle 83°

Main boom 20 m

Radius (m)	Jib length in (m)							
	20	41	53	65	77	89	101	110
11.5	t	t	t	t	t	t	t	t
18	117.0							
22	64.6	61.6						
24	45.3	43.5	44.6					
26	39.0	37.0	37.9					
28		32.9	32.8	33.7				
30		26.5	26.0	26.4	25.1			
32		24.4	23.7	23.4	23.4	17.2		
36		20.9	19.7	19.3	19.2	16.5	12.2	
38		19.5	18.3	17.7	17.3	15.9	12.1	9.1
42		17.0	15.9	14.9	14.4	13.6	11.5	8.9
44		15.8	14.8	13.7	13.2	12.2	11.3	8.6
55			10.4	9.5	8.5	7.3	6.7	5.9
65				6.9	5.9	4.8	3.8	3.3
70					5.0	3.8	2.8	2.1
75					4.1	3.0	2.1	
80						2.3		

Main boom 32 m

Radius (m)	Jib length in (m)								
	20	41	53	65	77	89	101	113	
13	t	t	t	t	t	t	t	t	
20	108.7								
24	73.0	64.8							
26	55.5	54.0	47.3						
28	47.2	50.0	45.3						
30		45.6	43.1	32.9					
34		41.1	40.3	32.1	24.6				
38		34.4	35.2	30.2	23.8	16.7			
42		28.5	29.5	28.4	22.7	16.1	11.8		
46		24.3	25.2	24.8	21.6	15.4	11.3	8.1	
55		20.8	21.4	21.7	20.1	14.7	10.8	7.7	
65			15.5	15.7	16.0	13.0	10.0	7.0	
80				11.1	11.1	10.9	8.9	6.2	
85					6.2	5.7	5.4	4.4	
90						4.6	4.0	3.0	
95						3.4	2.9	2.2	

Main boom 41 m

Radius (m)	Jib length in (m)							
	20	41	53	65	77	89	101	113
14	t	t	t	t	t	t	t	t
22	93.4							
24	61.7	56.5						
26	55.9	51.8	44.8					
28	49.9	47.2	43.3					
32		44.0	40.9	31.9				
36		37.5	35.5	30.7	23.3			
38		32.1	31.0	28.2	22.5	16.1		
42		29.4	28.8	27.1	22.0	15.8	11.4	
46		25.0	25.3	24.4	20.8	15.2	11.1	7.7
55		21.8	21.6	21.5	19.7	14.5	10.7	7.5
70			15.8	16.0	15.9	12.9	9.7	6.8
80				9.6	9.4	9.1	8.2	5.5
85					6.6	5.9	5.6	4.6
90						4.8	4.2	3.2
95						3.7	3.2	2.4

Main boom 56 m

Radius (m)	Jib length in (m)								
	20	41	53	65	77	89	101	113	
15.9	t	t	t	t	t	t	t	t	
22	75.6								
26	56.8	47.9							
28	48.4	42.4	38.1						
30	44.4	38.9	36.3						
34		36.4	33.8	28.8					
38		31.8	29.6	27.0	20.9				
40		27.9	26.4	24.2	20.3	14.8			
44		25.9	24.9	23.0	19.8	14.6	10.5		
46		22.9	22.5	20.8	18.3	14.0	10.2	7.2	
48		21.4	20.9	19.7	17.7	13.6	10.0	7.1	
60		19.9	19.5	18.7	17.1	13.2	9.9	7.0	
70			13.1	13.1	12.8	10.8	8.6	6.1	
80				9.7	9.1	8.4	7.3	5.2	
90					6.6	5.7	5.3	4.2	
95						3.7	3.1	2.2	

Main boom 59 m

Radius (m)	Jib length in (m)							
	20	41	53	65	77	89	101	104
16.2	t	t	t	t	t	t	t	t
24	71.7							
26	50.9	44.7						
28	47.0	41.5	36.7					
30	43.4	38.2	35.5					
34		35.7	33.0	28.2				
38		31.2	28.9	26.4	20.6			
40		27.6	25.8	23.6	20.0	14.3		
42		25.8	24.3	22.4	19.5	14.2	10.3	
44		24.1	23.1	21.4	18.7	14.0	10.3	9.6
46		22.7	22.1	20.3	17.9	13.7	10.2	9.6
48		21.3	20.6	19.2	17.2	13.3	10.0	9.4
60		19.8	19.3	18.3	16.6	12.9	9.8	9.2
70			13.2	12.9	12.5	10.4	8.5	8.0
80				9.6	9.1	8.2	7.0	6.6
95					6.6	5.6	5.1	5.1

Main boom 65 m

Radius (m)	Jib length in (m)		
	20	41	53
17	t	t	t
24	63.3		
26	48.0	41.7	
28	44.5	39.0	
30	41.7	36.2	33.0
32	38.7	33.7	31.0
34		31.6	29.0
36		29.5	27.1
38		27.8	25.6
40		26.3	24.2
42		24.7	22.8
44		23.2	21.6
46		22.0	20.7
48		20.7	19.5
50		19.3	18.3
60		18.0	17.1

Main boom 68 m

Radius (m)	Jib length in (m)
	38
22.6	t
24	42.5
26	41.6
28	38.6
30	35.7
32	33.6
34	31.2
36	29.2
38	27.6
40	26.0
42	24.5
44	23.3
46	21.9
48	20.4

TLT 10525129 M00000 Preliminary 7

Capacities in metric tons with luffing jib (No. 2316.xx) 124 t counterweight + 57 t carbody counterweight. Above lift chart is for reference only. For actual lift duty and complete chart with all available configurations please refer to lift chart in operator's cab or manual.

Lift chart - luffing jib (No. 2316.xx)

Main boom angle 75°

Main boom 20 m

Radius (m)	Jib length in (m)							
	20	41	53	65	77	89	101	110
18	t	t	t	t	t	t	t	t
26	85.3	t	t	t	t	t	t	t
32	43.1	44.7	t	t	t	t	t	t
36		30.2	32.0	t	t	t	t	t
42		25.1	25.3	24.9	t	t	t	t
44		19.9	19.1	19.4	18.8	t	t	t
46		18.5	17.8	17.7	18.0	t	t	t
48		17.1	16.5	16.2	16.3	14.0	t	t
50		15.1	15.4	14.9	15.1	13.9	t	t
55			14.5	13.9	14.1	13.0	t	t
60			12.3	11.6	11.1	11.2	9.8	7.5
65				9.8	9.2	8.6	8.4	7.2
70				8.4	7.6	6.7	6.6	6.3
75				6.8	6.4	5.4	4.8	4.7
80					5.3	4.2	3.6	3.2
85					4.2	3.2	2.5	2.1

Main boom 32 m

Radius (m)	Jib length in (m)								
	20	41	53	65	77	89	101	113	
20	t	t	t	t	t	t	t	t	
30	70.1	t	t	t	t	t	t	t	
34	45.6	43.0	t	t	t	t	t	t	
40		37.6	34.5	t	t	t	t	t	
44		31.0	30.0	27.3	t	t	t	t	
50		27.5	26.7	24.9	20.7	t	t	t	
55		23.4	22.7	21.6	19.9	14.7	t	t	
60			20.0	19.2	17.9	14.1	10.0	t	
65			17.7	17.0	16.1	13.3	9.8	6.7	
70				15.1	14.3	12.2	9.4	6.5	
80				13.5	12.8	11.4	9.0	6.2	
85					10.0	9.0	7.9	5.5	
90					8.8	7.8	6.8	5.0	
95						6.8	5.8	3.4	
100						5.8	4.9		
105							4.0		
							3.3		

Main boom 41 m

Radius (m)	Jib length in (m)							
	20	41	53	65	77	89	101	113
22.3	t	t	t	t	t	t	t	t
32	58.6	t	t	t	t	t	t	t
38	40.9	37.4	t	t	t	t	t	t
40		31.2	29.2	t	t	t	t	t
42		29.8	27.6	t	t	t	t	t
48		28.1	26.3	23.7	t	t	t	t
50		23.7	22.7	21.0	18.7	t	t	t
55		22.5	21.7	19.9	18.1	t	t	t
60			19.1	17.9	16.2	13.7	t	t
65			17.0	16.1	14.4	12.4	9.7	t
70			14.8	14.4	13.1	11.2	9.3	6.4
75				12.9	11.8	10.2	8.6	6.1
85				11.4	10.4	9.2	7.8	5.8
90					8.0	7.0	5.9	4.8
95						6.0	4.9	3.9
105						5.1	4.1	2.5

Main boom 56 m

Radius (m)	Jib length in (m)								
	20	41	53	65	77	89	101	113	
26.2	t	t	t	t	t	t	t	t	
36	44.7	t	t	t	t	t	t	t	
42	32.4	28.7	t	t	t	t	t	t	
44		24.4	22.5	t	t	t	t	t	
46		23.5	21.5	t	t	t	t	t	
50		22.4	20.6	18.3	t	t	t	t	
55		20.4	18.6	16.9	t	t	t	t	
60		18.2	16.7	15.1	13.4	t	t	t	
65			15.1	13.8	12.0	10.0	t	t	
70			13.7	12.3	10.8	9.0	7.6	t	
75				11.0	9.8	8.0	6.7	5.3	
80					9.7	8.6	7.3	5.9	
85					8.5	7.5	6.3	5.2	
90						6.4	5.3	4.2	
95						5.5	4.4	3.3	
100							3.7	2.6	
							2.9		

Main boom 59 m

Radius (m)	Jib length in (m)						
	20	41	53	65	77	89	104
28	t	t	t	t	t	t	t
36	40.7	t	t	t	t	t	t
42	31.7	27.3	t	t	t	t	t
46		23.6	21.6	t	t	t	t
48		21.7	19.9	17.3	t	t	t
50		20.7	18.9	17.1	t	t	t
55		19.8	18.0	16.3	t	t	t
60		17.9	16.2	14.6	12.8	t	t
65			14.7	13.2	11.5	9.5	t
70			13.2	11.9	10.3	8.4	7.1
75				10.6	9.3	7.5	6.3
80				9.3	8.2	6.8	5.5
85				8.1	7.1	6.0	4.8
90					6.1	5.0	3.8
95					5.2	4.1	3.0
100						3.3	2.3

Main boom 65 m

Radius (m)	Jib length in (m)		
	20	41	53
28.5	t	t	t
30	36.8	t	t
32	35.4	t	t
34	33.4	t	t
36	31.6	t	t
38	30.0	t	t
40	28.6	24.3	t
42		23.2	t
44		22.0	t
46		20.9	19.0
48		20.0	18.1
50		19.1	17.4
55		18.3	16.6
60		16.7	14.9
65			13.4
70			12.3
			10.9

Main boom 68 m

Radius (m)	Jib length in (m)
	38
36.9	t
38	24.4
40	24.2
42	22.8
44	21.6
46	20.6
48	19.7
50	18.9
55	18.1
	16.5

TLT 10525129 M00000 Preliminary 7

Capacities in metric tons with luffing jib (No. 2316.xx) 124 t counterweight + 57 t carbody counterweight. Above lift chart is for reference only. For actual lift duty and complete chart with all available configurations please refer to lift chart in operator's cab or manual.

Lift chart - luffing jib (No. 2316.xx)

Main boom angle 65°

Main boom 20 m

Radius (m)	Jib length in (m)							
	20	41	53	65	77	89	101	110
24	t	t	t	t	t	t	t	t
30	59.9							
36	37.9							
42		28.7						
48		20.4	20.4					
50		16.0	16.0					
55		14.8	14.7	15.1				
60			12.0	12.0				
65			10.1	9.8	9.8			
70				8.1	8.0	7.2		
75				6.8	6.3	5.8	4.8	
80					5.0	4.5	4.1	3.1
85					4.0	3.3	3.0	2.6
85					3.0	2.3	2.0	

Main boom 32 m

Radius (m)	Jib length in (m)								
	20	41	53	65	77	89	101	113	
30	t	t	t	t	t	t	t	t	
36	42.9								
42	15.1								
48		26.9							
55		22.7	21.8						
65		19.0	18.2	17.3					
70			14.4	13.6	12.7				
75				12.1	11.1	10.0			
85				10.8	9.7	8.6	7.4		
90					7.4	6.4	5.3	4.1	
95					6.4	5.4	4.3	3.2	
100						4.5	3.5	2.4	
105						3.7	2.7		
105							2.0		

Main boom 41 m

Radius (m)	Jib length in (m)						
	20	41	53	65	74	89	101
34	t	t	t	t	t	t	t
38	34.7						
44	30.2						
55		23.1					
60		17.6	16.7				
65		15.1	14.8	13.8			
70			13.2	12.2	11.4		
75			11.8	10.7	9.9		
80				9.4	8.6	7.0	
85				8.2	7.5	6.0	4.8
90					5.5	4.1	3.0
95						3.3	2.2
100						2.6	

Main boom 56 m

Radius (m)	Jib length in (m)						
	20	41	53	65	77	89	
38.3	t	t	t	t	t	t	
44	25.3						
46	21.9						
55	15.1						
60		14.7					
65		12.9	11.6				
70		11.3	10.1	8.9			
75			8.8	7.6			
80			7.7	6.5	5.3		
85				5.6	4.3	3.1	
90				4.7	3.5	2.3	
95					2.8		
95					2.1		

Main boom 59 m

Radius (m)	Jib length in (m)					
	20	41	53	65	77	89
39.6	t	t	t	t	t	t
44	23.4					
46	21.2					
55	20.0					
60		13.9				
65		12.2	10.9			
70		10.6	9.5			
75			8.2	7.0		
80			7.1	5.9	4.7	
85				5.0	3.8	2.5
90				4.1	3.0	
90				3.4	2.2	

Main boom 65 m

Radius (m)	Jib length in (m)		
	20	41	53
42.1	t	t	t
44	19.8		
46	19.3		
48	18.4		
50	17.5		
55	15.1		
60		12.2	
65		10.7	
70		9.3	8.0
75		8.1	6.9
80			5.9
80			5.0

Main boom 68 m

Radius (m)	Jib length in (m)
	38
53.7	t
55	12.1
60	11.7
65	10.3
65	8.9

TLT 10525129 M00000 Preliminary 7

Capacities in metric tons with luffing jib (No. 2316.xx) 124 t counterweight + 57 t carbody counterweight. Above lift chart is for reference only. For actual lift duty and complete chart with all available configurations please refer to lift chart in operator's cab or manual.

Lift chart - luffing jib (No. 2316.xx)

Main boom angle 45°

Main boom 20 m

Radius (m)	Jib length in (m)					
	20	41	53	65	77	89
33.4	t	t	t	t	t	t
34	30.1					
36	36.6					
55	34.0	16.4				
65			11.6			
75				8.1		
80				5.9		
85					5.3	
90					4.1	3.5
95						2.9

Main boom 32 m

Radius (m)	Jib length in (m)					
	20	41	53	65	77	
41.9	t	t	t	t	t	
44	25.0					
60	23.5	14.3				
65		12.7				
70			10.5			
75			9.2			
80				7.0		
85				6.0		
90					4.0	
100					2.6	

Main boom 41 m

Radius (m)	Jib length in (m)			
	20	41	53	65
48.3	t	t	t	t
50	18.4			
70	17.6			
80		9.2		
90			6.0	
95				3.2
				2.5

Main boom 56 m

Radius (m)	Jib length in (m)		
	20	41	
58.9	t	t	
60	9.5		
80	9.3		
		3.0	

Main boom 59 m

Radius (m)	Jib length in (m)		
	20	41	
61	t	t	
80	7.9		
		2.1	

Main boom 65 m

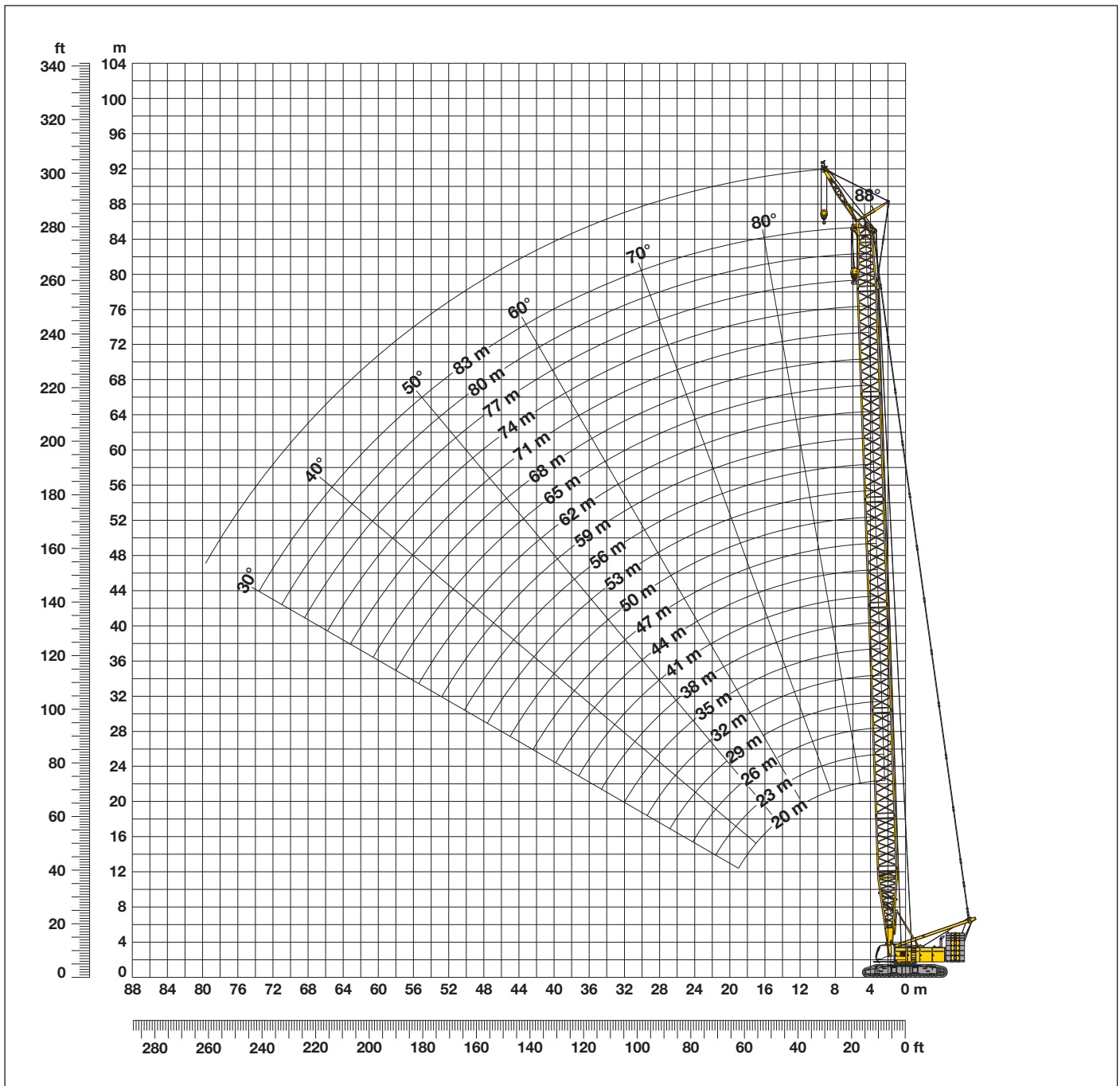
Radius (m)	Jib length in (m)	
	20	
65.3	t	
	4.8	

TLT 10525129 M00000 Preliminary 7

Capacities in metric tons with luffing jib (No. 2316.xx) 124 t counterweight + 57 t carbody counterweight. Above lift chart is for reference only. For actual lift duty and complete chart with all available configurations please refer to lift chart in operator's cab or manual.

Working range main boom 88° - 30°

Fixed jib (No.0906.21) offset 30°



Main boom configuration (No. 2821.xx)

Configuration for boom lengths between 20 m and 83 m

Length	Amount of boom extensions																					
	10 m	12 m	15 m	18 m	21 m	24 m	27 m	30 m	33 m	36 m	39 m	42 m	45 m	48 m	51 m	54 m	57 m	60 m	63 m	66 m	69 m	
Boom foot	1	1	1	1	1	1	1	1	1	1	1	1	1	1	1	1	1	1	1	1	1	1
Boom insert	1		1		1		1		1		1		1		1		1		1		1	
Boom insert		1	1		1	1		1		1		1		1		1		1		1		1
Boom insert				1	1	1	1	2	2	2	2	3	3	3	3	4	4	4	4	5	5	5
Boom head	1	1	1	1	1	1	1	1	1	1	1	1	1	1	1	1	1	1	1	1	1	1
Boom length (m)	20	23	26	29	32	35	38	41	44	47	50	53	56	59	62	65	68	71	74	77	80	83

Lift chart - fixed jib 7 m (No. 0906.21) offset 30°

124 t counterweight and 57 t carbody counterweight

Main boom 20 m

Radius (m)	t
14	61.6
15	59.6
16	57.4
17	55.5
18	54.2
19	52.9
20	51.6
22	49.2
24	47.8
26	46.9

Main boom 26 m

Radius (m)	t
13	67.6
14	65.0
15	62.9
16	61.1
17	59.5
18	57.8
19	56.2
20	54.9
22	52.9
24	50.8
26	49.0
28	47.5
30	43.7
32	39.8

Main boom 32 m

Radius (m)	t
11	74.5
12	71.6
14	67.9
16	63.9
18	60.8
20	58.0
22	55.5
24	53.6
26	51.3
28	47.8
30	43.5
32	39.7
34	36.4
36	33.5

Main boom 38 m

Radius (m)	t
10	78.1
12	73.7
14	69.5
16	66.5
18	63.1
20	60.5
22	58.0
24	55.4
26	52.4
28	47.3
30	42.9
34	35.9
38	30.4
42	26.1

Main boom 44 m

Radius (m)	t
9	81.4
10	79.2
12	74.9
14	71.2
16	68.1
18	65.3
20	62.5
24	57.1
28	46.9
32	38.7
36	32.6
40	27.8
44	23.9
48	20.6

Main boom 50 m

Radius (m)	t
9	81.9
10	79.8
12	75.8
14	72.9
16	69.5
20	62.9
24	55.9
28	46.3
32	38.1
36	32.0
40	27.2
44	23.3
48	20.1
50	18.6

Main boom 56 m

Radius (m)	t
8.3	82.6
10	80.2
12	76.6
14	73.7
16	70.8
20	65.7
24	54.9
28	45.8
32	37.6
36	31.4
40	26.7
44	22.8
48	19.6
55	15.1

Main boom 62 m

Radius (m)	t
8.5	82.1
10	80.6
12	77.3
14	74.2
16	71.7
20	65.2
28	44.6
32	37.0
36	30.8
40	26.0
44	22.1
48	18.9
55	14.4
60	11.9

Main boom 68 m

Radius (m)	t
8,7	81.5
10	80.9
12	78.1
14	74.8
16	72.8
20	62.4
28	43.0
32	36.1
36	30.2
40	25.5
44	21.5
48	18.3
55	13.9
65	9.1

Main boom 74 m

Radius (m)	t
8,9	80.9
10	80.9
12	77.8
14	75.1
16	72.8
20	62.1
28	41.4
36	29.3
40	24.7
44	20.9
48	17.6
55	13.2
65	8.2
70	6.1

Main boom 80 m

Radius (m)	t
9,1	79.4
10	79.4
12	77.3
14	74.8
16	71.7
20	60.0
28	39.9
36	28.2
40	23.9
44	20.3
48	17.0
55	12.5
65	7.4
75	3.5

Main boom 83 m

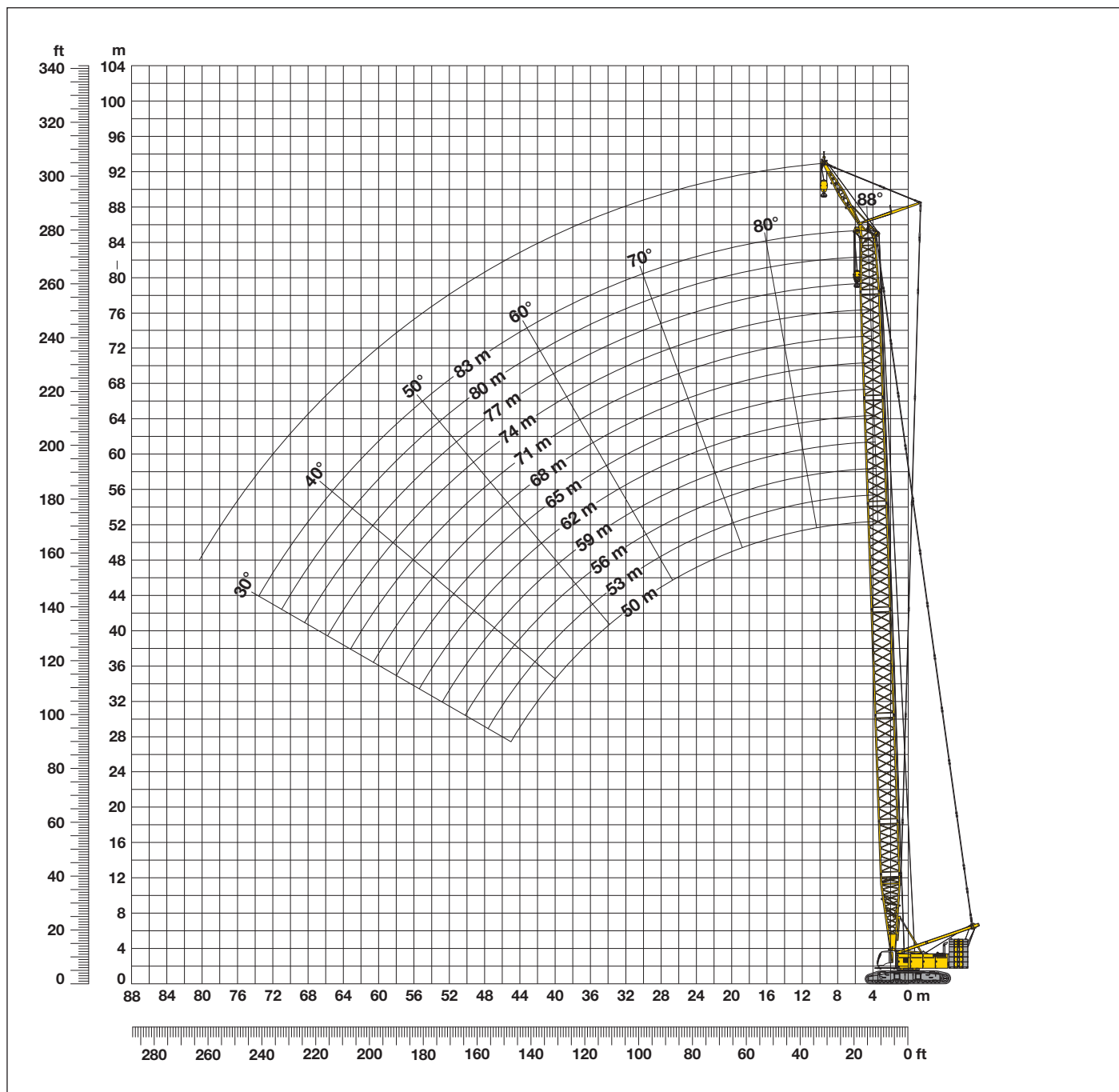
Radius (m)	t
9,2	77.7
10	77.7
12	75.2
14	72.0
16	68.4
20	58.9
28	39.1
36	27.4
40	23.3
44	19.8
48	16.7
55	12.2
65	7.0
75	3.1

TLT 10525129 M00000 Preliminary 5

Capacities in metric tons with fixed jib (No. 1507.20) 124 t counterweight + 57 t carbody counterweight. Above lift chart is for reference only. For actual lift duty and complete chart with all available configurations please refer to lift chart in operator's cab or manual.

Working range main boom 88° - 30°

Fixed jib (No. 1507.20) offset 30°



Main boom configuration (No. 2821.xx)

Configuration for boom lengths between 20 m and 83 m

Length	Amount of boom extensions	Amount of boom extensions											
		1	1	1	1	1	1	1	1	1	1	1	1
Boom foot 10 m		1	1	1	1	1	1	1	1	1	1	1	1
Boom insert 3 m		1		1		1		1		1		1	
Boom insert 6 m		1			1	1		1		1		1	
Boom insert 12 m		2	3	3	3	3	4	4	4	4	5	5	5
Boom head 7 m		1	1	1	1	1	1	1	1	1	1	1	1
Boom length (m)		50	53	56	59	62	65	68	71	74	77	80	83

Lift chart - fixed jib 8 m (No. 1507.20) offset 30°

124 t counterweight and 57 t carbody counterweight

Main boom 50 m

Radius (m)	t
8	117.0
10	117.0
12	110.9
14	103.6
16	89.1
20	70.4
24	56.9
28	45.9
32	37.7
36	31.5
40	26.8
44	22.9
48	19.6
50	18.2

Main boom 53 m

Radius (m)	t
8.1	117.0
10	117.0
12	110.2
14	102.5
16	88.8
20	69.3
24	56.0
28	45.7
32	37.5
36	31.3
40	26.6
44	22.7
48	19.4
55	15.0

Main boom 56 m

Radius (m)	t
8.2	117.0
10	117.0
12	110.6
14	99.9
16	87.2
20	68.1
24	55.0
28	45.4
32	37.2
36	31.0
40	26.2
44	22.3
48	19.1
55	14.6

Main boom 59 m

Radius (m)	t
8.3	117.0
10	117.0
12	111.9
14	97.5
16	85.7
20	66.9
28	44.7
32	36.9
36	30.7
40	25.9
44	22.0
48	18.8
55	14.3
60	11.8

Main boom 62 m

Radius (m)	t
8.5	117.0
10	115.2
12	108.2
14	95.2
16	84.2
20	65.7
28	43.8
32	36.5
36	30.3
40	25.6
44	21.6
48	18.4
55	13.9
60	11.4

Main boom 65 m

Radius (m)	t
8.6	117.0
10	109.3
12	103.7
14	92.0
16	82.7
20	64.7
28	43.1
32	36.2
36	30.1
40	25.3
44	21.4
48	18.2
55	13.7
65	8.9

Main boom 68 m

Radius (m)	t
8.7	103.7
10	103.3
12	97.8
14	88.8
16	81.3
20	63.5
28	42.3
32	35.4
36	29.7
40	24.9
44	21.0
48	17.8
55	13.3
65	8.4

Main boom 71 m

Radius (m)	t
8.8	97.8
10	97.8
12	92.4
14	85.4
16	79.1
20	62.4
28	41.5
36	29.3
40	24.5
44	20.7
48	17.5
55	13.0
65	8.0
70	5.8

Main boom 74 m

Radius (m)	t
8.9	91.8
10	91.8
12	87.0
14	81.5
16	75.9
20	61.3
28	40.7
36	28.6
40	24.2
44	20.3
48	17.1
55	12.6
65	7.4
75	3.5

Main boom 77 m

Radius (m)	t
9.0	86.8
10	86.8
12	82.7
14	78.4
16	73.8
20	60.3
28	39.9
36	28.1
40	23.8
44	20.1
48	16.8
55	12.3
65	7.1
75	3.2

Main boom 80 m

Radius (m)	t
9.2	81.9
10	81.9
12	78.5
14	74.8
16	70.8
20	59.2
28	39.1
36	27.4
40	23.2
44	19.6
48	16.4
55	11.9
65	6.6
75	2.7

Main boom 83 m

Radius (m)	t
9.3	76.9
10	76.9
12	74.3
14	71.1
16	67.5
20	58.2
28	38.4
36	26.7
40	22.5
44	19.0
48	16.1
55	11.5
65	6.2
75	2.3

TLT 10525129 M00000 Preliminary 5

Capacities in metric tons with fixed jib (No. 1507.20) 124 t counterweight + 57 t carbody counterweight. Above lift chart is for reference only. For actual lift duty and complete chart with all available configurations please refer to lift chart in operator's cab or manual.

